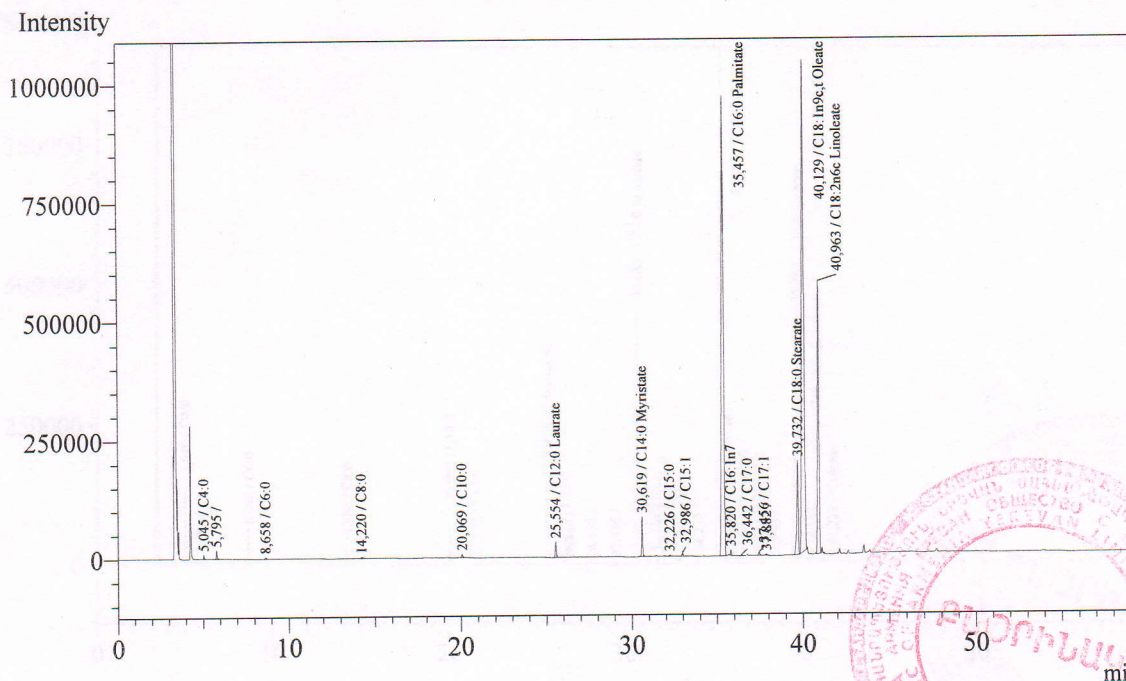


Analysis Date & Time : 27.02.2018 11:05:48
 User Name : Admin
 Vial# : 0
 Sample Name : 1-142-8
 Sample ID : FAME
 Sample Type : Unknown
 Injection Volume :
 ISTD Amount :

Data Name : C:\GCsolution\Data\FAME\2018\02.27.18\1-142-8.gcd
 Method Name : C:\GCsolution-Methods\Omegawax\Fame\Fame\FAME 37 mix N2 .1 mdif 1.gcm



Peak#	Ret.Time	Area	Height	Conc.	Unit	Mark	ID#	Cmpd Name
1	5.045	32341	9785	18,495	weigi		1	C4:0
3	8.658	19178	3396	0,684	weigi		2	C6:0
4	14.220	18451	2683	0,289	weigi		3	C8:0
5	20.069	36295	7400	0,388	weigi		4	C10:0
6	25.554	137422	33727	1,159	weigi		6	C12:0 Laurate
7	30.619	339677	85299	2,484	weigi		8	C14:0 Myristate
8	32.226	13571	3340	0,097	weigi		10	C15:0
9	32.986	30917	7764	0,250	weigi		11	C15:1
10	35.457	7900708	964520	51,501	weigi		12	C16:0 Palmitate
11	35.820	45947	11743	0,334	weigi		13	C16:1n7
12	36.442	11282	2570	0,071	weigi		14	C17:0
13	37.456	35993	7879	0,255	weigi		15	C17:1
15	39.732	1184169	198288	6,182	weigi		16	C18:0 Stearate
16	40.129	8982367	1032820	59,817	weigi		17	C18:1n9c,t Oleate
17	40.963	3139909	570109	22,288	weigi		18	C18:2n6c Linoleate
18	41.222	6479	2102	0,063	weigi		20	C18:3n6
19	42.016	6140	1799	0,049	weigi	V	19	C18:2n6t
Total		21940846	2945224					